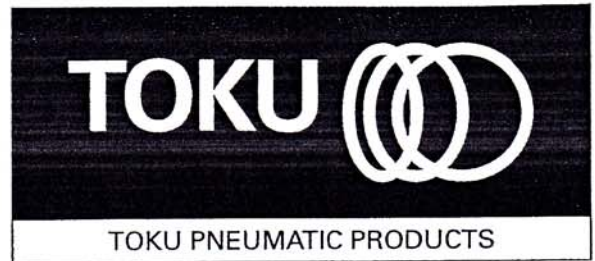
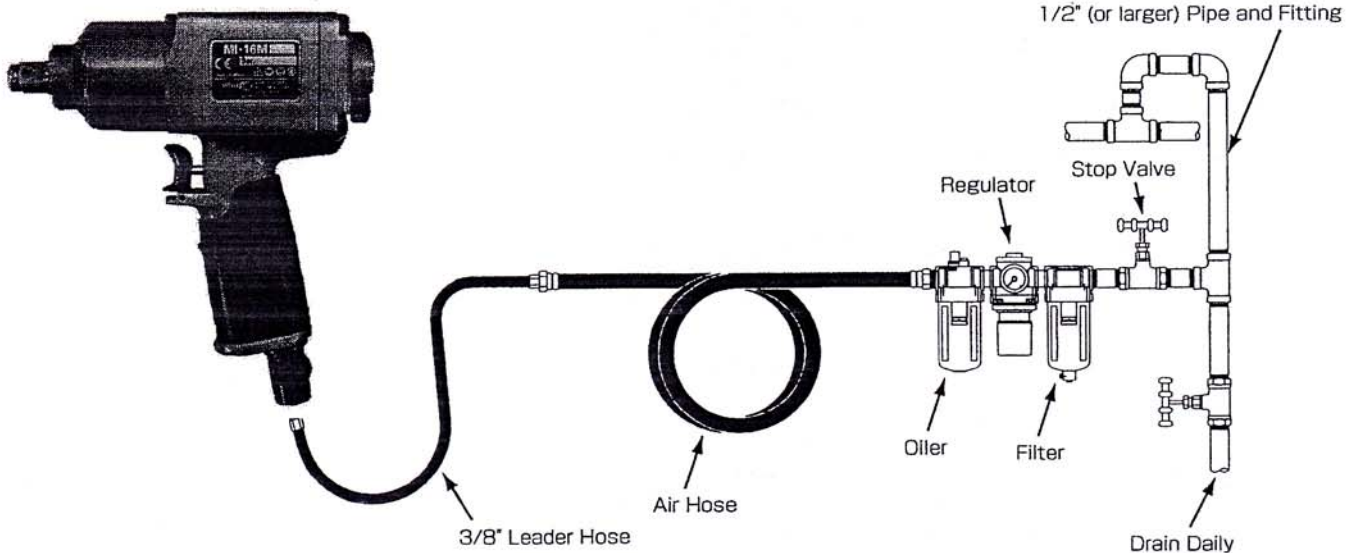


MAINTENANCE INSTRUCTIONS IMPACT WRENCH MODEL MI-16M



AIR HOSE AND HOSE CONNECTION:



OPERATING INSTRUCTIONS

“WARNING”

1. ALWAYS USE APPROVED EYE PROTECTION WHEN OPERATING THIS TOOL.
2. ALWAYS USE IMPACT SOCKETS IN GOOD CONDITION. SOCKETS IN BAD CONDITION REDUCE IMPACT POWER AND COULD ALSO SHATTER AND CAUSE POSSIBLE PERSONAL INJURY. NEVER USE HAND SOCKETS.
3. ALWAYS USE THE SIMPLEST HOOKUP POSSIBLE. LONG, SPRINGY EXTENSION BARS ABSORB IMPACT AND COULD BREAK LOOSE AND CAUSE POSSIBLE PERSONAL INJURY.
4. ALWAYS DIRECT EXHAUST AWAY FROM YOURSELF AND OTHERS IN THE AREA.
5. ALWAYS DISCONNECT TOOL WHEN NOT IN USE.

LUBRICATION

To flush out gum and dirt :

1. Daily before and after each shift, pour a liberal quantity of gum solvent oil into air line.
2. Connect tool to air line. Operate tool.
3. Repeat procedure before storing.
4. Monthly, check grease in impact unit.

AIR SUPPLY

1. Supply tool with 0.6MPa of clean, dry air. Higher pressure drastically reduces tool life and can void warranty
2. See diagram above for Pipe, Hose and Fitting size.
3. When using two or more hoses, Air Hoses should be larger than Leader Hose.

LOSS OF POWER/ERRATIC ACTION (possible causes)

1. Reduced compressor output.
2. Excessive drain on air line.
3. Moisture or restricted pipe, hose or fittings.
4. Improper size or poor condition of pipe, hose or fittings
5. Dirt or gum deposits cut tool power. To correct this, check and clean air strainer, then repeat lubrication procedure. (If outside conditions are in order, disassemble tool, replace worn or damaged parts, clean, assemble and lubricate.)

REPLACEMENT PARTS

Always use GENUINE TOKU TOOLS Replacement Parts.
When replacement parts are required, order by Part No. and Description in the Parts List.

SOUND LEVEL

Sound Level dB(A) in accordance with ISO 15744 : Pressure 89
Power 100

VIBRATIONS LEVEL

Vibration m/s² in accordance with ISO 8662-7 : 5.2



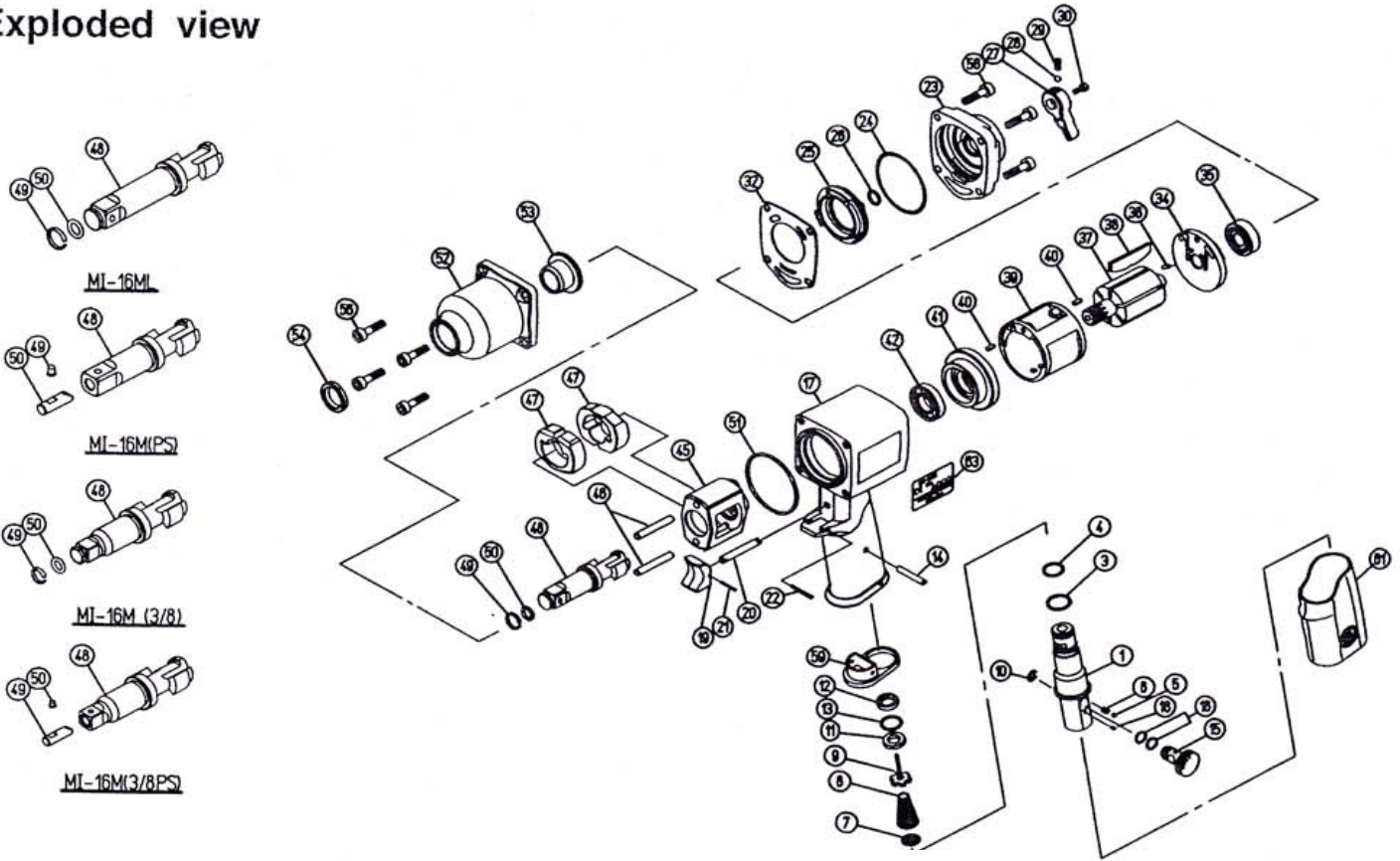
www.air-allied.com.au

No.4

1/2" IMPACT WRENCH

MODEL MI-16M

Exploded view



Index No.	Parts No.	Q'ty Req	Description	Index No.	Parts No.	Q'ty Req	Description
1	43-17-06-060	1	Air Inlet	45	43-17-02-440	1	Hammer Frame
3	13-11-03-012	1	O Ring S-14	46	43-17-02-460	2	Hammer Pin
4	13-11-03-010	1	O Ring S-12	47	43-17-02-450	2	Hammer
5	13-05-01-003	1	Steel Ball M3	48	43-17-05-500	1	Anvil Shank
6	13-08-09-005	1	Spring 3X4(0.4)	49	13-08-05-006	1	Socket Retainer
7	13-68-04-003	1	Air Screen	50	13-11-05-006	1	O Ring 6227-6
8	13-08-03-202	1	Throttle Valve Spring	51	13-11-03-037	1	O Ring S-46
9	13-68-05-005	1	Throttle Valve	52	43-17-02-520	1	Clutch Housing
10	13-03-03-006	1	Retaining Rings-Etype	53	43-17-02-490	1	Shank Bushing
11	13-68-04-009	1	Throttle Valve Seat	54	13-12-42-001	1	Oil Seal VB16244
12	43-17-06-D80	1	Throttle Valve Spacer	56	13-17-05-020	8	Hex Socket Head Cap Screw M5X20
13	13-11-03-011	1	O Ring S-12.5	59	13-74-03-021	1	Exhaust Deflector
14	13-06-04-025	1	Spring Pin 4X25				
15	43-17-06-150	1	Regulator Valve	61	13-66-07-061	1	Grip Rubber
16	13-11-03-004	2	O Ring S-6	63	13-73-05-100	1	Name Plate
17	43-17-02-011	1	Motor Housing		43-17-05-50C		Anvil shank CP(Incl. Index No.48,49&50)
18	13-06-02-004	1	Spring Pin 2X4		43-17-02-52C		Clutch Housing CP(Incl. Index No.52,53&54)
19	13-67-03-071	1	Trigger	MI-16ML(RH)			
20	43-17-02-100	1	Throttle Push Pin	48	43-17-08-500	1	Anvil Shank L (RH)
21	13-06-01-134	1	Spring Pin 1.6X14	49	13-08-05-006	1	Socket Retainer
22	13-06-02-020	1	Spring Pin 2X20	50	13-11-05-006	1	O Ring 6227-6
23	43-17-02-350	1	Housing Cover		43-17-08-50C	(1CP)	Anvil Shank CP(Incl. Index No.48,49&50)
24	13-11-03-037	1	O Ring S-46	MI-16M(PS)			
25	43-17-02-210	1	Reverse Valve	48	43-17-04-500	1	Anvil Shank
26	13-11-03-007	1	O Ring S-9	49	43-18-16-610	1	Retainer Pin
27	13-67-03-072	1	Reverse Valve Lever	50	13-63-07-001	1	Retainer Plug
28	13-05-02-010	1	Steel Ball 5/32(M3.97)		43-17-04-50C	(1CP)	Anvil Shank CP(Incl. Index No.48,49&50)
29	13-08-03-203	1	Spring 3.6X8(0.5)	MI-16M(3/8)			
30	13-17-03-008	1	Hex.Socket Head Cap Screw M3X8	48	43-17-31-501	1	Anvil Shank
32	13-62-02-038	1	Housing Cover Packing	49	13-08-05-039	1	Socket Retainer
34	43-17-02-370	1	Rear End Plate	50	13-08-05-038	1	Retainer Rubber Ring
35	13-01-04-001	1	Bearing 6000		43-17-31-50G	(1CP)	Anvil Shank CP(Incl. Index No.48,49&50)
36	13-06-02-106	1	Spring Pin 2.5X6	MI-16M(3/8PS)			
37	43-17-02-390	1	Rotor	48	43-17-33-500	1	Anvil Shank
38	13-71-10-010	6	Vane	49	43-17-33-610	1	Retainer Pin
39	43-17-02-360	1	Liner	50	13-49-05-001	1	Retainer Plug
40	13-06-03-006	2	Spring Pin 3X6		43-17-33-50C	(1CP)	Anvil Shank CP(Incl. Index No.48,49&50)
41	43-17-02-380	1	Front End Plate				
42	13-01-20-004	1	Bearing EE-4				