

## 3/4" IND PISTOL IMPACT WRENCH

Brand: **Toku**

Product Code: **MI22PSC**

TOKU 

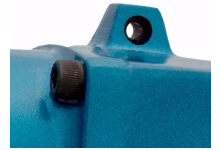


TOKU 



TOKU 

TOKU 



## 3/4" IND PISTOL IMPACT WRENCH

3/4" Square drive Industrial pistol grip impact wrench, made in Japan. Cold Forged Twin Hammer mechanism making it far superior to any other on the market in its class. Based on the MI20 product this model has no built-in speed regulator, yet has an increased maximum power of 1,200 Ft-Lbs (1,627 Nm), and also features a hanger point to allow it to be used with suspension systems (if required).

This product is perfect for manufacturing, construction and mine sites as well as tyre industry where lightweight, power and performance is required in a quality and competitively priced product.

This product features both ring and pin socket retainer system giving you added flexibility. Also included is a 360 degree swivel air inlet to eliminate tangled supply hoses, quiet air exhaust which is directed through the bottom of the handle away from the operator, 4 step speed controller for varied torque output and a rubber front protector to protect both the tool and the rim or application surface.

This product is tried and tested for many years and still beats many of its composite competitors in weight, power and durability!

This model has a standard length anvil and polyurethane protective cover.

### Attachments

[MI22 Spare Parts List\\_TK105](#)

### Specifications

Exhaust	Handle - Silenced
Hammer Mechanism	Cold Forged - Twin Hammer
Hose Size	1/2"
Net Weight	4.48 kg
Square Drive	3/4"
Torque - Ultimate	1,627 Nm (1,200 ft/lbs)